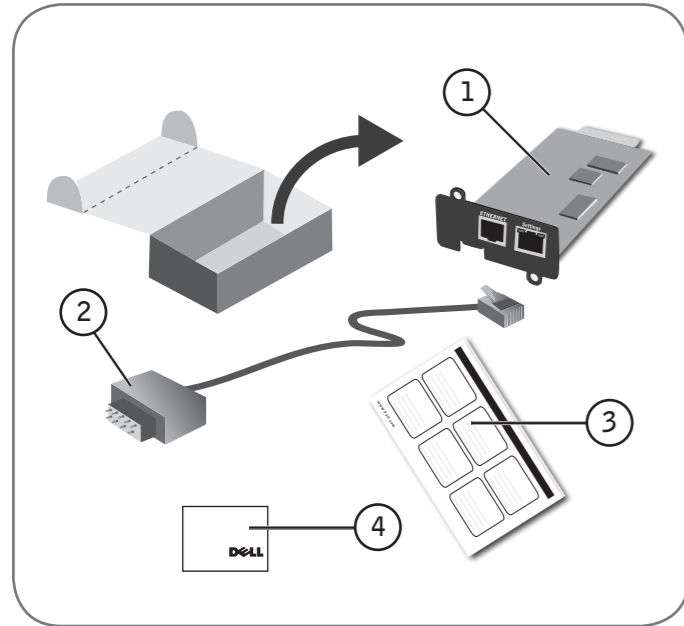
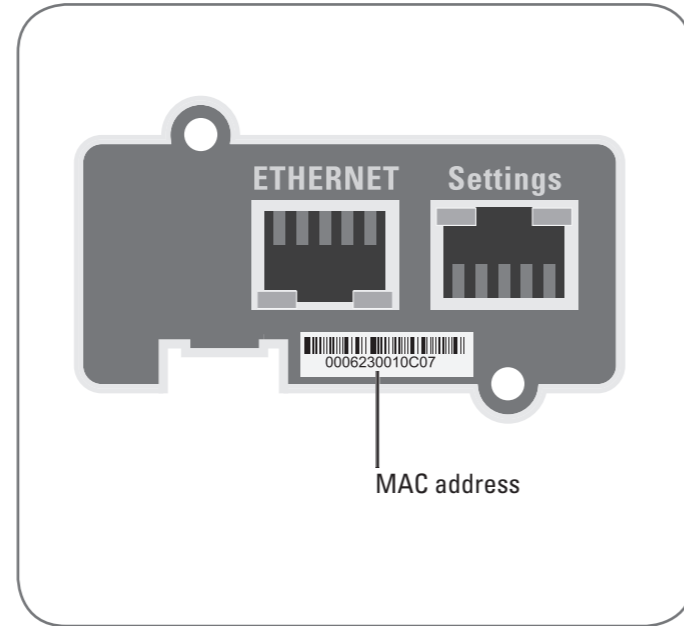




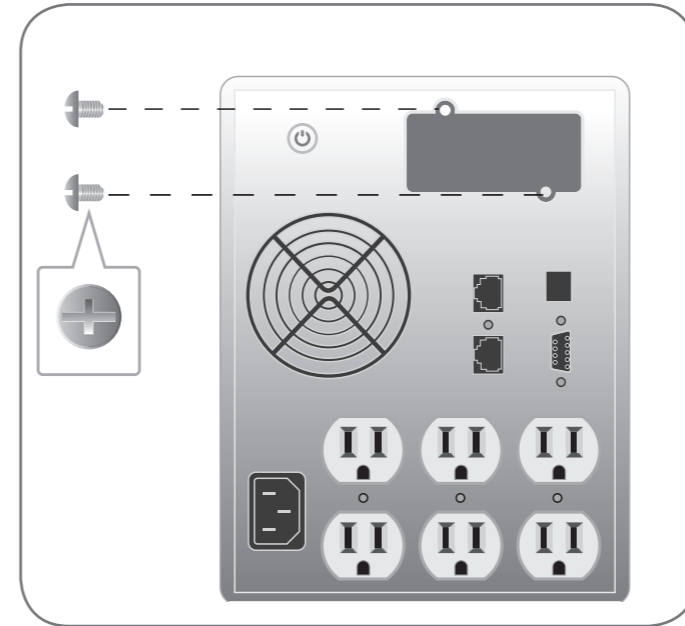
# Setting Up Your Network Management Card



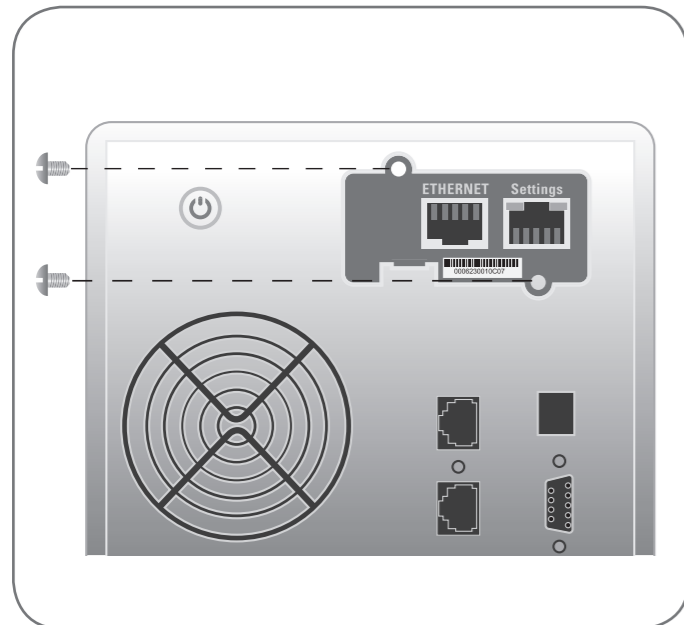
- 1** **Verify the package contents**
1. Network Management Card
  2. Serial cable
  3. Setup instructions
  4. Safety, Environmental, and Regulatory Information



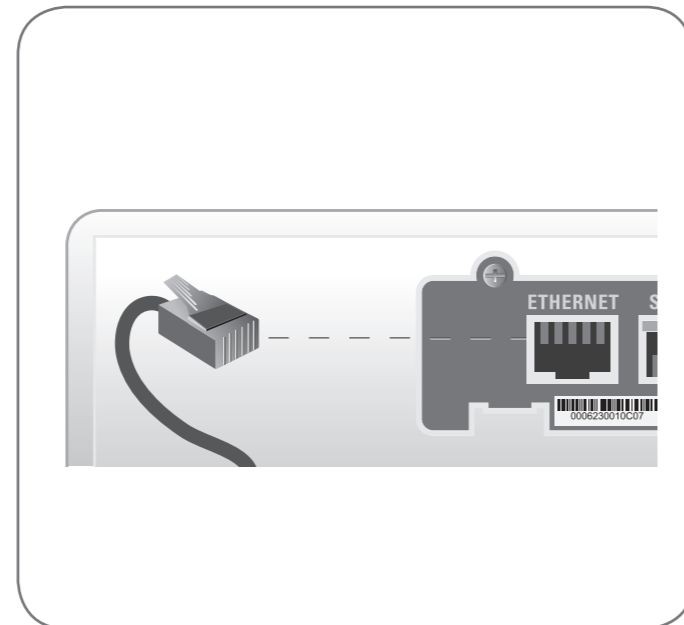
- 2** **Note the MAC address on the card**



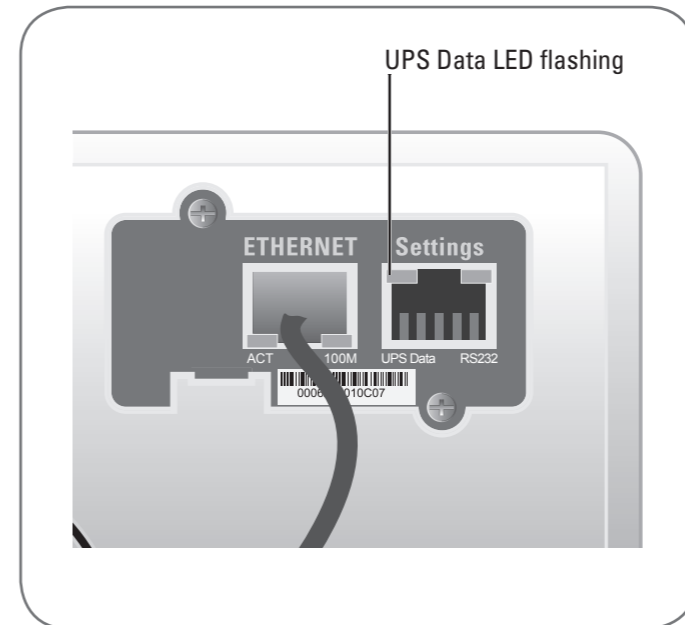
- 3** **Remove the cover from the UPS communication bay**



- 4** **Insert and secure the card with the retaining screws**

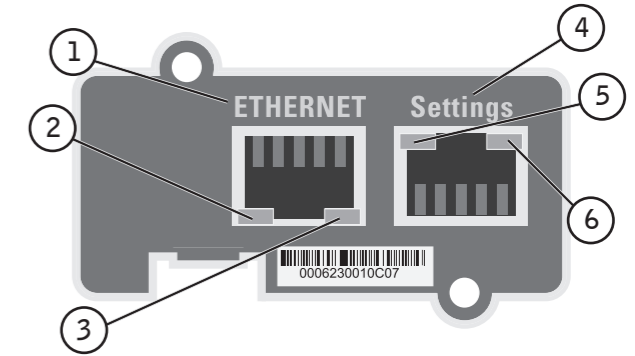


- 5** **Connect an Ethernet cable to the card and to the network (not supplied)**
- NOTE: You can set the card parameters via the Settings Port even if the network is not connected



- 6** **Wait approximately two minutes until the UPS Data LED flashes regularly, indicating normal operation**

## About Your Network Management Card



1. Ethernet port (10/100BaseT)
2. ACT LED (green)
3. 100M LED (orange)
4. Settings port
5. UPS Data LED (green)
6. RS232 LED (orange)

### Ethernet Port (10/100BaseT)

ACT LED (green)	Off	Card is not connected to the network
	On	Card is connected to the network, but no activity
	Flashing	Port is sending/receiving
100M LED (orange)	Off	Port is operating at 10 Mbits/s
	On	Port is operating at 100 Mbits/s

### Settings Port

UPS Data LED (green)	Off	Card is starting
	On	Card is communicating with the UPS
	Flashing	Normal operation; communication with the UPS is operational
RS232 LED (orange)	On	Configuration menu is activated
	Off	Normal operation; Configuration menu is not activated

# Configuring the Card

IP Default Settings:	
IP Network	BOOTP/DHCP enabled
	IP address: 192.168.1.2
	Subnet mask: 255.255.0.0
	Gateway: 0.0.0.0
	NTP server: pool.ntp.org
Web page access control	User name: admin Password: admin
Settings port access control	Password: admin (not modifiable)
Date and time	Synchronize with an NTP server (GMT)

1. Connect the serial cable to the card's Settings port and the computer's COM port.
2. Start a terminal emulator, such as HyperTerminal®, with these settings:

Bits per second	Data bits	Stop bits	Parity	Flow control
9600	8	1	none	none

"Echo typed characters locally" option: disabled.

3. Type admin.

NETWORK MANAGEMENT CARD :	
1	: Reset
2	: Network configuration
3	: Set Login Password to Default
4	: Return to Default Configuration
0	: Exit

## If your network is equipped with a BOOTP/DHCP server (default)

The card automatically collects the IP parameters from the server.

To view the parameters:

1. Press the 2 key for Network configuration.
2. Press the 1 key for Read Network settings.

The card displays the settings supplied by the server.

NETWORK CONFIGURATION :	
MAC address	: 00:20:85:FD:1C:07
Mode	: DHCP
IP address	: 192.168.1.2
Subnet mask	: 255.255.248.0
Gateway	: 166.99.17.1

3. To exit, press the 0 key twice.

## If your network is not equipped with a BOOTP/DHCP server

Configure the card manually. To set the network configuration:

1. Press the 2 key for Network configuration.
2. Press the 2 key for Modify Network settings.

Follow the instructions and enter the IP parameters:

NETWORK SETTINGS :	
1	: Read Network settings
2	: Modify Network settings
3	: Set Ethernet speed
0	: Exit
<p>For each of the following questions, you can press &lt;Return&gt; to select the value shown in braces, or you can enter a new value. Should this target obtain IP settings from the network? [N] N Static IP address [172.17.21.94]? 172.17.21.21 Subnet Mask IP address [255.255.248.0]? 255.255.255.0 Gateway address IP address [172.17.17.1]? 172.17.17.1 Done</p>	

Wait until Done displays, indicating that the IP parameters have been saved.

3. Press the 0 key to exit.
4. Press the 1 key to reset.
5. Press the 2 key to restart.

The card restarts with the new IP settings in approximately one minute.

# Accessing the Card

1. Run a Web browser.
2. Enter the card's IP address in the address bar:  
<https://xxx.xxx.xxx.xxx/> (for example, <https://166.99.1.82/>)
3. The home page displays:

4. Set the time by clicking the Time command.
5. Continue configuration via the sections in the Settings menu.

Information in this document is subject to change without notice.  
© 2009 Dell Inc. All rights reserved.

Reproduction of these materials in any manner whatsoever without the written permission of Dell Inc. is strictly forbidden.

Dell and the DELL logo are trademarks of Dell Inc. Dell disclaims proprietary interest in the marks and names of others.

May 2009

This setup document and the *Dell Network Management Card User's Guide* are available in other languages at: [support.dell.com](http://support.dell.com)

Français  
Ce document de configuration et le Guide d'Utilisation de la Carte de Gestion de Réseau Dell sont disponibles dans d'autres langues sur : [support.dell.com](http://support.dell.com)

Deutsch  
Das vorliegende Dokument zur Konfiguration sowie die Bedienungsanleitung für die Dell Network Management Karte sind in weiteren Sprachen unter der folgenden Adresse erhältlich: [support.dell.com](http://support.dell.com)

日本語  
このセットアップ用説明書および Dell Network Management Card ユーザーガイドはこちらのリンクにて他の言語でもご覧いただけます: [support.dell.com](http://support.dell.com)

한국어  
이 설치 문서와 Dell 네트워크 관리 카드 사용자 가이드는 아래의 사이트에서 다른 언어로도 입수할 수 있습니다: [support.dell.com](http://support.dell.com)

Русский язык  
Данная инструкция по настройке, а также Руководство пользователя платой сетевого администрирования Dell доступны на других языках по адресу: [support.dell.com](http://support.dell.com)

简体中文  
本安装手册和戴尔网络管理卡用户指南在网站上提供下列语言版本: [support.dell.com](http://support.dell.com)

Español  
Este documento de instalación y la Guía del Usuario de la Tarjeta de Manejo de Redes de Dell se encuentran disponibles en otros idiomas tales como: [support.dell.com](http://support.dell.com)

繁體中文  
此安裝文件和戴爾網路管理卡使用者指南的下列語言版本, 可在網站上取得: [support.dell.com](http://support.dell.com)